



PERFECTTM
VIEW

VIDEO SURVEILLANCE

THE
PERFECT
WAY TO
STAY
SECURE

RECORDERS & PTZs

CATALOG

TELECO[®]
COMBINING TECHNOLOGIES

Auto-Tracking IP PTZ Cameras

HNP508A-IR/36X



HNP514A-IR/36X



HNP512A-IR/36X



HNP302A-IR/30X



Description	8 MP 36X IR Tracking IP PTZ	4 MP 36X IR Tracking IP PTZ	2 MP 36X IR Tracking IP PTZ	2 MP 30X IR Tracking IP PTZ
Image Sensor	1/1.9" Progressive Scan CMOS	1/1.8" Progressive Scan CMOS	1/1.8" Progressive Scan CMOS	1/2.8" Progressive Scan CMOS
Resolution	4096 x 2160	2560 x 1440	1920 x 1080	1920 x 1080
Min. Illumination	0.02 Lux, 0 Lux with IR	0.002 Lux , 0 Lux with IR	0.002 Lux , 0 Lux with IR	0.002 Lux , 0 Lux with IR
Shutter Speed	1 to 1/30,000s	1 to 1/30,000s	1 to 1/30,000s	1 to 1/30,000s
Lens	5.7mm - 205.2mm, 36X	5.7mm - 205.2mm, 36X	5.7mm - 205.2mm, 36X	4.3mm - 129mm, 30X
DNR	3D DNR, EIS, HLC/BLC, SVC, Defog	3D DNR, EIS, HLC/BLC, SVC, Defog	3D DNR, EIS, HLC/BLC, SVC, Defog	3D DNR, EIS, HLC/BLC, SVC, Defog
Day & Night	ICR Cut Filter	ICR Cut Filter	ICR Cut Filter	ICR Cut Filter
WDR	WDR	DWDR	120dB WDR	120dB WDR
Video Compression	H.264/ MPEG4	H.265+/H.265/H.264+/H.264	H.265+/H.265/H.264+/H.264	H.265+/H.265/H.264+/H.264
Frame Rate	4096 x 2160 @ 24FPS, 3840 x 2160 @ 30FPS	2560 x 1440 @ 30FPS	1920 x 1080 @ 60FPS	1920 x 1080 @ 60FPS
Storage	128GB Micro SD/SDHC/SDXC Card	128GB Micro SD/SDHC/SDXC Card	Built-in SD/SDHC Slot, up to 128GB	Built-in SD/SDHC Slot, up to 128GB
Audio	1/1	1/1	1/1	1/1
Alarm I/O	7/2	7/2	7/2	7/2
Operating Temp.	-40°C ~ 65°C (-40°F ~ 149°F)	-40°C ~ 65°C (-40°F ~ 149°F)	-40°C ~ 70°C (-40°F ~ 158°F)	-40°C ~ 65°C (-40°F ~ 149°F)
Power Supply	Hi-PoE & 24V AC	Hi-PoE & 24V AC	Hi-PoE & 24V AC	Hi-PoE & 24V AC
Power Consumption	60W Max.	60W Max.	60W Max.	60W Max.
IR Range	650 ft.	650 ft.	650 ft.	500 ft.
Dimensions	Φ10.5" x 16.4"	Φ10.5" x 16.4"	Φ10.5" x 16.14"	Φ9.65" x 14.72"
Weight	17.64 lbs	17.64 lbs	17.64 lbs	13.23 lbs
Wall, Pendant Mount	W: 602ZJ, P: 661(2)ZJ	W: 602ZJ, P: 661(2)ZJ	W: 602ZJ, P: 661(2)ZJ	W: 602ZJ, P: 661(2)ZJ
Pole, Corner Mount	P: 602ZJ-POLE, C: 602ZJ-CORNER	P: 602ZJ-POLE, C: 602ZJ-CORNER	P: 602ZJ-POLE, C: 602ZJ-CORNER	P: 602ZJ-POLE, C: 602ZJ-CORNER

NVR

HNRT00-128/116



HNRT00-128/124



HNRT00-256/124



HNRA10-64



Description	128 Channel NVR with Raid support	128 Channel NVR with Raid support	256 Channel NVR with Raid support	64 Channel NVR with Raid support
Video Compression	H.265/H.265+/H.264/H.264+/MPEG4	H.265/H.265+/H.264/H.264+/MPEG4	H.265/H.265+/H.264/H.264+/MPEG4	H.265/H.265+/H.264/H.264+/MPEG4
IP Video Output	128 Ch. 576 Mbps max input	128 Ch. 576 Mbps max input	256 Ch. 768 Mbps max input	64 Ch. 320 Mbps Max input
Built-in PoE	N/A	N/A	N/A	N/A
Video Output	2 HDMI, 1 VGA	2 HDMI, 1 VGA	2 HDMI, 1 VGA	2 HDMI, 1 VGA
Audio Input/ Output	1/1	1/1	1/1	1/2
Two-Way Audio	1/1	1/1	1/1	1/1
Recording Resolution per CH.	Up to 12 Megapixels	Up to 12 Megapixels	Up to 12 Megapixels	Up to 12 Megapixels
HDMI	4K, 60Hz	4K, 60Hz	4K, 60Hz	4K
VGA Output Resolution	1080P, 60Hz	1080P, 60Hz	1080P, 60Hz	1080P, 60Hz
RAID	RAID 0, 1, 5, 6, 10	RAID 0, 1, 5, 6, 10	RAID 0, 1, 5, 6, 10	RAID 0, 1, 5, 6, 10
Synchronous Playback	16 Ch.	16 Ch.	16 Ch.	16 Ch.
Alarm Input/ Output	16/ 8	16/ 8	16/ 8	16/ 4
Network Interface	4 RJ45 10M/ 100M/ 1000M, 4 fiber optic (optional)	4 RJ45 10M/ 100M/ 1000M, 4 fiber optic (optional)	4 RJ45 10M/ 100M/ 1000M, 4 fiber optic (optional)	2 RJ45 10M/ 100M/ 1000M Adaptive interface
Internal SATA	16 SATA up to 10TB each	24 SATA up to 10TB each	24 SATA up to 10TB each	8 SATA up to 10TB each
eSATA	1 eSATA	1 eSATA	1 eSATA	1 eSATA
USB interface	2 x USB 2.0, 2 x USB 3.0	2 x USB 2.0, 2 x USB 3.0	2 x USB 2.0, 2 x USB 3.0	2 x USB 2.0, 1 x USB 3.0
Rack Mountable	Rack Mounted 2.5U Chassis	Rack Mounted 3U Chassis	Rack Mounted 3U Chassis	19-inch rack-mounted 2U chassis
Dimensions	17.4" x 19.4" x 5.7"	17.6" x 20.8" x 6.8"	17.6" x 20.8" x 6.8"	17.52" x 18.5" x 3.54"
Weight	35.3 lbs	51 lbs	51 lbs	22 lbs
Power Supply	100 ~ 240 VAC, 6.3 A, 550W	100 ~ 240 VAC, 6.3 A, 550W	100 ~ 240 VAC, 6.3 A, 550W	100 ~ 240 VAC

IP PTZ Cameras

HNP315-IR



HNP1A14-IR/25X



HNP312-IR/32X



HNP312-IR/25X



5 MP 30X Out door PTZ Network Camera	4 MP 25X Mini IR PTZ Network Camera	2 MP 32X IR PTZ Network Camera	2 MP 25X IR PTZ Network Camera
1/1.9" Progressive Scan CMOS	1/2.5" Progressive Scan CMOS	1/2.8" Progressive Scan CMOS	1/2.8" Progressive Scan CMOS
2592 x 1944	2048 x 1536	1920 x 1080	1920 x 1080
0.005 Lux	0.005 Lux, 0 Lux with IR	0.005 Lux, 0 Lux with IR	0.005 Lux, 0 Lux with IR
1 to 1/30,000s	1 to 1/30,000s	1 to 1/30,000s	1 to 1/30,000s
5.9mm - 177mm, 30X	4.8mm - 120mm, 25X	4.8mm - 153mm, 32X	4.8mm - 120mm, 25X
3D DNR, EIS, HLC/BLC, SVC, Defog	3D DNR, HLC/BLC	3D DNR, EIS, HLC/BLC, Defog	3D DNR, EIS, HLC/BLC, Defog
ICR Cut Filter	ICR Cut Filter	ICR Cut Filter	ICR Cut Filter
DWDR	120 dB WDR	120 dB WDR	120 dB WDR
H.265+/H.265/H.264+/H.264	H.265+/H.265/H.264+/H.264	H.265+/H.265/H.264+/H.264	H.265+/H.265/H.264+/H.264
2592 x 1944 @ 30FPS, 1920 x 1080 @ 60FPS	2592 x 1944 @ 30FPS, 1920 x 1080 @ 60FPS	1920 x 1080 @ 60FPS	1920 x 1080 @ 60FPS
Built-in SD/SDHC Slot, up to 128GB	Built-in SD/SDHC Slot, up to 128GB	Built-in SD/SDHC Slot, up to 128GB	Built-in SD/SDHC Slot, up to 128GB
1/1	1/1	1/1	1/1
2/1	2/2	2/1	2/1
-30°C ~ 65°C (-22°F ~ 149°F)	-30°C ~ 65°C (-22°F ~ 149°F)	-30°C ~ 65°C (-22°F ~ 149°F)	-30°C ~ 65°C (-22°F ~ 149°F)
Hi-PoE & 24V AC	Hi-PoE & 24V AC	Hi-PoE & 24V AC	Hi-PoE & 24V AC
40W Max.	18W Max.	40W Max.	40W Max.
500 ft.	150 ft.	500 ft.	500 ft.
Φ8.66" x 13.91"	Φ6.67" x 6.34"	Φ8.66" x 13.91"	Φ8.66" x 13.91"
9.92 lbs	5.4 lbs	9.9 lbs	9.92 lbs
W: 602ZJ, P: 661[2]ZJ	W: 605ZJ, R: 671ZJ-SD11	W: 602ZJ, P: 661[2]ZJ	W: 602ZJ, P: 661[2]ZJ
P: 602ZJ-POLE, C: 602ZJ-CORNER	N/A	P: 602ZJ-POLE, C: 602ZJ-CORNER	P: 602ZJ-POLE, C: 602ZJ-CORNER

NVR

HNRA10-32



HARA15-16



HARA15-8



HNRA10-32/S



HNR51P6-32

HNR51P24-32*



HNR51P6-16



32 Channel NVR	16 Ch TVI & Analog +	8 Ch TVI & Analog +	32 Channel Deep Learning NVR	32 Channel NVR	16 Channel NVR
with Raid support	Up to 32 ch IP Hybrid DVR	Up to 18 ch IP Hybrid DVR	with Raid support and False Alarm		
H.265/H.265+/H.264/H.264+/MPEG4	H.264/ H.264+ / H.265	H.264/ H.264+ / H.265	H.264/ H.264+ / H.265	H.264/ H.264+ / H.265	H.264/ H.264+ / H.265
32 Ch. 320 Mbps Max Input	up to 32 channels (up to 8MP)	up to 18 channels (up to 8MP)	32 Ch. 320 Mbps Max Input	32 Ch. (256 Mbps Max input)(320)*	16 Ch. (160 Mbps Max input)
N/A	N/A	N/A	N/A	16 port 802.3af PoE Switch (24)*	16 port 802.3af PoE Switch
2 HDMI, 2 VGA	2 HDMI, 1 VGA, 1 BNC	2 HDMI, 1 VGA, 1 BNC	2 HDMI, 2 VGA	1(2)* HDMI, 1 VGA, 1 BNC	1 HDMI, 1 VGA
1/2	16/2	8/2	1/2	1/1	1/1
1/1	1/1	1/1	1/1	1/1	1/1
Up to 12 Megapixels	30 fps @ up to 6MP	30 fps @ up to 6MP	Up to 12 Megapixels	Up to 12 Megapixels	Up to 12 Megapixels
4K, 60Hz	4K, 60Hz	4K, 60Hz	4K, 60Hz	4K, 60Hz	4K, 60Hz
1080P, 60Hz	1080p, 60 Hz	1080p, 60 Hz	1080P, 60Hz	1080P, 60Hz	1080P, 60Hz
RAID 0, 1, 5, 6, 10	RAID 0, 1, 5, 10	0, 1, 5, 10	RAID 0, 1, 5, 10	N/A	N/A
16 Ch.	16 Ch.	8 Ch.	16 Ch.	16 Ch.	16 Ch.
16/ 4	16/ 4	16/4	16/ 4	16/4	16/4
2 RJ45 10M/ 100M/ 1000M	2 RJ45 10M/ 100M/ 1000M	2 RJ45 10M/ 100M/ 1000M	2 RJ45 10M/ 100M/ 1000M	1 RJ45 10M/ 100M/ 1000M	1 RJ45 10M/ 100M/ 1000M
Adaptive interface	Adaptive interface	Adaptive interface	Adaptive interface	Adaptive interface	Adaptive interface
8 SATA up to 10TB each	8 SATA up to 10TB each	8 SATA up to 10TB each	8 SATA up to 10TB each	4 SATA up to 10TB each	4 SATA up to 10TB each
1 eSATA	1 eSATA	1 eSATA	1 eSATA	N/A	N/A
2 x USB 2.0, 1 x USB 3.0	2 x USB 2.0, 1 x USB 3.0	2 x USB 2.0, 1 x USB 3.0	2 x USB 2.0, 1 x USB 3.0	2 x USB 2.0, 1 x USB 3.0	1 x USB 2.0, 1 x USB 3.0
19-inch rack-mounted 2U	19-inch rack mounted 2U	19-inch rack mounted 2U	19-inch rack-mounted 2U	19-inch rack mounted 1.5U	19-inch rack mounted 1.5U
17.52" x 18.5" x 3.54"	17.5" x 18.5" x 3.5"	17.5" x 18.5" x 3.5"	17.52" x 18.5" x 3.54"	17.5" x 15.4" x 2.75"	17.5" x 15.4" x 2.75"
22 lbs	17.64 lbs	17.64 lbs	22 lbs	11 lbs	11 lbs
100 ~ 240 VAC	100 - 240 VAC, 47 - 63 Hz	100 - 240 VAC, 47 - 63 Hz	100 ~ 240 VAC	100~240VAC, 20W	100~240VAC, 20W

2MP IP PTZ Cameras

HNP312-OD/25X



HNP112-OD/25X



HNP112-IR/25X



HNP112-OD/RE



2 MP 25X Outdoor PTZ Network Camera	2 MP 25X Mini Outdoor PTZ Network Camera	2 MP 25X Mini IR PTZ Network Camera	2 MP 25X Mini Recess/Surface Mount PTZ
1/2.8" Progressive Scan CMOS	1/2.8" Progressive Scan CMOS	1/2.8" Progressive Scan CMOS	1/2.8" Progressive Scan CMOS
1920 x 1080	1920 x 1080	1920 x 1080	1920 x 1080
0.005 Lux	0.005 Lux	0.005 Lux, 0 Lux with IR	0.005 Lux
1 to 1/30,000s	1 to 1/30,000s	1 to 1/30,000s	1 to 1/30,000s
4.8mm - 120mm, 25X	4.8mm - 120mm, 25X	4.8mm - 120mm, 25X	4.8mm - 120mm, 25X
3D DNR, EIS, HLC/BLC, Defog	3D DNR, EIS, HLC/BLC, Defog	3D DNR, EIS, HLC/BLC, Defog	3D DNR, EIS, HLC/BLC, Defog
ICR Cut Filter	ICR Cut Filter	ICR Cut Filter	ICR Cut Filter
120dB WDR	120dB WDR	120dB WDR	120dB WDR
H.265+/H.265/H.264+/H.264	H.265+/H.265/H.264+/H.264	H.265+/H.265/H.264+/H.264	H.265+/H.265/H.264+/H.264
1920 x 1080 @ 30FPS	1920 x 1080 @ 30FPS	1920 x 1080 @ 30FPS	1920 x 1080 @ 30FPS
Built-in SD/SDHC Slot, up to 128GB	Built-in SD/SDHC Slot, up to 128GB	Built-in SD/SDHC Slot, up to 128GB	Built-in SD/SDHC Slot, up to 128GB
1/1	1/1	1/1	1/1
2/1	1/1	1/1	1/1
-30°C ~ 65°C (-22°F ~ 149°F)	-30°C ~ 65°C (-22°F ~ 149°F)	-30°C ~ 65°C (-22°F ~ 149°F)	-30°C ~ 65°C (-22°F ~ 149°F)
Hi-PoE & 24V AC	Hi-PoE & 24V AC	Hi-PoE & 24V AC	Hi-PoE & 24V AC
22W Max.	18W Max.	20W Max.	18W Max.
N/A	N/A	300 ft.	N/A
Φ8.66" x 12.02"	Φ7.09" x 9.43"	Φ6.48" x 11.42"	Φ6.5" x 7.0"
6.61 lbs	4.41 lbs	4.41 lbs	4.41 lbs
W: 602ZJ, P: 661(2)ZJ	W: 602ZJ, P: 661(2)ZJ	W: 602ZJ, P: 661(2)ZJ	N/A
P: 602ZJ-POLE, C: 602ZJ-CORNER	P: 602ZJ-POLE, C: 602ZJ-CORNER	P: 602ZJ-POLE, C: 602ZJ-CORNER	N/A

NVR

HNR510-32

HNR510-16

HNR32P6-16

HNR32P8-8

HNR32P4-4



32 Channel NVR	16 Channel NVR	16 Channel NVR	8 Channel NVR	4 Channel NVR
H.264/ H.264+ / H.265	H.264/ H.264+ / H.265	H.264/ H.264+ / H.265/ MPEG4	H.264/ H.264+ / H.265/ MPEG4	H.264/ H.264+ / H.265/ MPEG4
32 Ch. (256 Mbps Max input)	16 Ch. (160 Mbps Max input)	16 Ch. (160 Mbps Max input)	8 Ch. (80 Mbps Max input)	4 Ch. (40 Mbps Max input)
N/A	N/A	16 port 802.3af PoE Switch	8 port 802.3af PoE Switch	4 port 802.3af PoE Switch
1 HDMI, 1 VGA	1 HDMI, 1 VGA	1 HDMI, 1 VGA	1 HDMI, 1 VGA	1 HDMI, 1 VGA
1/1	1/1	1/1	1/1	1/1
1/1	1/1	1/1	1/1	1/1
Up to 12 Megapixels	Up to 12 Megapixels	Up to 12 Megapixels	Up to 12 Megapixels	Up to 8 Megapixels
4K, 60Hz	4K, 60Hz	4K, 60Hz	4K, 60Hz	4K, 60Hz
1080P, 60Hz	1080P, 60Hz	1080P, 60Hz	1080P, 60Hz	1080P, 60Hz
N/A	N/A	N/A	N/A	N/A
16 Ch.	16 Ch.	16 Ch.	8 Ch.	4 Ch.
16/4	16/4	4/1	4/1	N/A
2 RJ45 10M/ 100M/ 1000M	2 RJ45 10M/ 100M/ 1000M	1 RJ45 10M/ 100M/ 1000M	1 RJ45 10M/ 100M/ 1000M	1 RJ45 10M/ 100M/ 1000M
Adaptive interface	Adaptive interface	Adaptive interface	Adaptive interface	Adaptive interface
4 SATA up to 10TB each	4 SATA up to 10TB each	2 SATA up to 10TB each	2 SATA up to 10TB each	1 SATA up to 10TB each
N/A	N/A	N/A	N/A	N/A
2 x USB 2.0, 1 x USB 3.0	1 x USB 2.0, 1 x USB 3.0	1 x USB 2.0, 1 x USB 3.0	1 x USB 2.0, 1 x USB 3.0	2 x USB 2.0
19-inch rack mounted 1.5U	19-inch rack mounted 1.5U	385mm chassis	385mm chassis	1U Chassis
17.5" x 15.4" x 2.75"	17.5" x 15.4" x 2.75"	15.2" x 12.4" x 2"	15.2" x 12.4" x 2"	12.4" x 9.1" x 1.8"
11 lbs	11 lbs	6.6 lbs	6.6 lbs	2.6 lbs
100~240VAC, 20W	100~240VAC, 20W	100 - 240 VAC	100 to 240 VAC	48VDC, 10W

HKB-1100KI



HKB-1004KI



HKB-1005KI



Description	Anroid 4.4 10. LCD Touchscreen	PTZ/IP/DVR Keyboard Controller	USB KEYBOARD CONTROLLER
Audio Line In	1-ch, 3.5 mm connector (2.0 Vp-p, 1 kΩ)	N/A	N/A
Audio Out	1-ch, 3.5 mm connector (Linear, 560 Ω)	N/A	N/A
Network Interface	1 RJ45 10M/100M/1000M self-adaptive Ethernet interface	N/A	N/A
RS-232 Interface	1 RS-232 interface	1 RS-232 interface	N/A
RS-485 Interface	1 RS-485 Interface	1 RS-485 Interface	N/A
USB interface	2 USB 2.0	N/A	N/A
LCD	Resolution: 1024 x 600	N/A	N/A
Power Supply	12 VDC	12 VDC	5 VDC via USB
Power Consumption	< 15W	< 10W	< 5W
Working Temp.	-10 °C ~ +55 °C (14 °F ~ 131 °F)	-10 °C ~ +55 °C (14 °F ~ 131 °F)	-10 °C ~ +55 °C (14 °F ~ 131 °F)
Dimensions	6.41" x 7.08" x 15.9"	17.08" x 6.41" x 1.7"	6.6" x 7" x 4.56"
Weight	3.75 lbs	2.76 lbs	2.76 lbs

TVI Encoder

HEAR504-16



HEAR504-8



Description	16 ch TVI to IP 1080P Encoder	8 ch TVI to IP 1080P Encoder
Video Input	16 channel BNC @ up to 1080p/30fps	8 channel BNC @ up to 1080p/30fps
Video Compression	H.264	H.264
Audio Input/Output	4/1	4/1
Audio Compression	G.711u	G.711u
Video Bitrate	32 Kbps to 10 Mbps	32 Kbps to 10 Mbps
Audio Bitrate	64 Kbps	64 Kbps
Stream Type	Video, Video & Audio	Video, Video & Audio
Dual Stream	Support	Support
Storage	2 Sata each up to 6 TB	2 Sata each up to 6 TB
External Storage	NAS, ISCSI, IPSAN	NAS, ISCSI, IPSAN
Network Interface	1 RJ45 10M / 100M / 1000M	1 RJ45 10M / 100M / 1000M
Serial Interface	1 RS485; Half Duplex	1 RS485; Half Duplex
Alarm Input/ Output	16/4	8/4
Power Supply	12 VDC	12 VDC
Power Consumption	45 W (without HDD)	30 W (without HDD)
Working Temperature	-10° C to 55° C (14° F to 131° F)	-10° C to 55° C (14° F to 131° F)
Working Humidity	10% to 90%	10% to 90%
Chassis	380 mm 1 U Chassis	380 mm 1 U Chassis
Dimensions	14.96" x 11.42" x 1.89"	14.96" x 11.42" x 1.89"
Weight	4.41 lbs	4.41 lbs

HARA15-16



HARA15-8



HAR328-8



HAR328-4



Description	3MP 16 Ch. Hybrid HD-TVI / IP DVR	3MP 8 Ch. Hybrid HD-TVI / IP DVR	8MP 8 Ch. Hybrid HD-TVI / AHD / CVI DVR	8MP 4 Ch. Hybrid HD-TVI / AHD / CVI DVR
Video Compression	H.265, H.265+, H.264, H.264+	H.265, H.265+, H.264, H.264+	H.265, H.265+, H.264, H.264+	H.265, H.265+, H.264, H.264+
Audio Compression HD-TVI/ AHD/Analog Video input IP	G.711u	G.711u	G.711u	G.711u
Video Input	16 BNC input, 1Vp-p, 75Ω	8 BNC input, 1Vp-p, 75Ω	8 BNC input, 1Vp-p, 75Ω	4 BNC input, 1Vp-p, 75Ω
Video Output	Up to 32-ch @ 8 MP resolution	Up to 16-ch @ 8 MP resolution	Up to 16-ch @ 8 MP resolution	Up to 8-ch @ 8 MP resolution
Recording Resolution	2 HDMI, 1 VGA, 1 CVBS, up to 4K	2 HDMI, 1 VGA, 1 CVBS, up to 4K	1 HDMI, 1 VGA, 1 CVBS, up to 4K	1 HDMI, 1 VGA, 1 CVBS, up to 4K
Audio Input/Output	Up to 3MP TVI @ 15 FPS	Up to 3MP TVI @ 15 FPS	Up to 8MP TVI @ 15 FPS	Up to 8MP TVI @ 15 FPS
Video Bit Rate	16/2	8/2	4/1	4/1
Audio Bit Rate	64 Kbps	64 Kbps	64 Kbps	64 Kbps
Video Bit Rate	32 Kbps to 10 Mbps	32 Kbps to 10 Mbps	32 Kbps to 16 Mbps	32 Kbps to 16 Mbps
Synchronous Playback	16 ch.	8 ch.	8 ch.	4 ch.
Alarm Input/ Output	16/4	16/4	8/4	4/1
Network Interface	2 × RJ45 10M/100M/1000M	2 × RJ45 10M/100M/1000M	1, RJ45 10M/100M/1000M	1, RJ45 10M/100M/1000M
USB interface	self-adaptive Ethernet interface	self-adaptive Ethernet interface	self-adaptive Ethernet interface	self-adaptive Ethernet interface
Communication	2 × USB 2.0, 1 × USB 3.0	2 × USB 2.0, 1 × USB 3.0	1 × USB 2.0, 1 × USB 3.0	1 × USB 2.0, 1 × USB 3.0
HDD Interface	1 × RS-232, 1 × RS-485, Keyboard	1 × RS-232, 1 × RS-485, Keyboard	1 × RS-232, 1 × RS-485, Keyboard	1 × RS-232, 1 × RS-485, Keyboard
Dual-stream	8 SATA interface Up to 10TB each bay	8 SATA interface Up to 10TB each bay	2 SATA interface Up to 10TB each bay	1 SATA interface Up to 10TB each bay
Power	Support	Support	Support	Support
Power Consumption	100 ~ 240VAC	100 ~ 240VAC	12VDC	12VDC
Dimensions	≤ 65W (without HDD)	≤ 45W (without HDD)	≤ 15 W (without HDD)	≤ 15 W (without HDD)
Weight	17.5 × 18.5 × 3.5 inch	17.5 × 18.5 × 3.5 inch	15.0 × 12.6 × 1.9 inch	12.4 × 9.5 × 1.8 inch
	17.6 lbs	17.6 lbs	4.4 lbs	3.3 lbs

HD-TVI Hybrid Video Recorder

HAR526-16



HAR526-8



HHR315-16



HHR315-8



Description	16 Ch 8MP TVI / AHD / CVI / Analog +	8 Ch 8MP TVI / AHD / CVI / Analog+	16 Ch 3MP TVI & Analog +	8 Ch 3MP TVI / AHD / Analog +
Video Compression	Up to 32 ch IP 8MP	Up to 16 ch IP 8MP	Up to 32 ch IP 8MP	Up to 16 ch IP 8MP
IP Video Output	H.264/ H.264+ / H. 265 / H.265+	H.264/ H.264+ / H. 265 / H.265+	H.264 / H.264+	H.264 / H.264+
Built-in PoE	Up to 32 channels (up to 8MP)	Up to 16 channels (up to 8MP)	Up to 32 channels (up to 8MP)	Up to 16 channels (up to 8MP)
Video Output	N/A	N/A	N/A	N/A
Audio Input/ Output	2 HDMI, 1 VGA, 1 BNC	2 HDMI, 1 VGA, 1 BNC	1 HDMI, 1 VGA, 1 BNC	1 HDMI, 1 VGA, 1 BNC
Two-Way Audio	4/2	4/2	4/1	4/1
Recording Resolution	1/1	1/1	1/1	1/1
Video out resolution	8 fps @ TVI 8MP; 12fps @ TVI 5MP	8 fps @ TVI 8MP; 12fps @ TVI 5MP	15 fps @ TVI 3MP	15 fps @ TVI 3MP
RAID	4K	4K	4K	4K
Synchronous Playback	0, 1, 5, 10	0, 1, 5, 10	N/A	N/A
Alarm Input/ Output	16 ch.	8 ch.	16 ch.	8 ch.
Network Interface	16/4	16/4	16/4	8/4
Internal SATA	2 RJ45 10M/ 100M/ 1000M	2 RJ45 10M/ 100M/ 1000M	1 RJ45 10M/ 100M/ 1000M	1 RJ45 10M/ 100M/ 1000M
eSATA	Adaptive interface	Adaptive interface	Adaptive interface	Adaptive interface
USB interface	4 SATA interfaces (up to 10 TB each)	4 SATA interfaces (up to 10 TB each)	2 SATA interfaces (up to 10 TB each)	2 SATA interfaces (up to 10 TB each)
Chassis	1 eSATA	1 eSATA	1 eSATA	1 eSATA
Dimensions	2 × USB 2.0, 1 × USB 3.0	2 × USB 2.0, 1 × USB 3.0	1 × USB 2.0, 1 × USB 3.0	1 × USB 2.0, 1 × USB 3.0
Weight	19-inch rack mounted 1.5U	19-inch rack mounted 1.5U	380mm chassis	380mm chassis
Power Supply	17.5" x 15.4" x 2.8"	17.5" x 15.4" x 2.8"	14.9" x 12.6" x 1.9"	14.9" x 12.6" x 1.9"
	11 lbs	11 lbs	6.6 lbs	6.6 lbs
	100 - 240 VAC, 47 - 63 Hz	100 - 240 VAC, 47 - 63 Hz	100 - 240 VAC, 47 - 63 Hz	100 - 240 VAC, 47 - 63 Hz

HD-TVI Hybrid Video Recorder

HAR526-32
HAR526-24*

HAR524-32

HAR524-24

HAR326-16

HAR326-8



8MP 32 Ch. Hybrid TVI / CVI / AHD DVR (24 Ch)*	4MP 32 Ch. Hybrid TVI / CVI / AHD DVR	4MP 24 Ch. Hybrid TVI / CVI / AHD DVR	8MP TVI / CVI / AHD 16 Ch. DVR	8MP TVI / CVI / AHD 8 Ch. DVR
H.264/ H.264+ / H. 265 / H.265+	H.264/ H.264+ / H. 265 / H.265+	H.264/ H.264+ / H. 265 / H.265+	H.264/ H.264+ / H. 265 / H.265+	H.264/ H.264+ / H. 265 / H.265+
G.711u	G.711u	G.711u	G.711u	G.711u
32 BNC input, 1Vp-p, 75Ω (24 Ch)*	32 BNC input, 1Vp-p, 75Ω	24 BNC input, 1Vp-p, 75Ω	16 BNC input, 1Vp-p, 75Ω	8 BNC input, 1Vp-p, 75Ω
Up to 48ch @ 8 MP resolution (40Ch)*	Up to 48ch @ 6 MP resolution	Up to 40ch @ 6 MP resolution	Up to 32ch @ 8 MP resolution	Up to 16ch @ 8 MP resolution
2 HDMI, 1 VGA, 1 CVBS up to 4K	2 HDMI, 1 VGA, 1 CVBS, up to 1920 × 1080	2 HDMI, 1 VGA, 1 CVBS, up to 1920 × 1080	1 HDMI, 1 VGA, 1 CVBS up to 4K	1 HDMI, 1 VGA, 1 CVBS up to 4K
Up to 8MP TVI @ 8 FPS	Up to 4MP TVI @ 15 FPS	Up to 4MP TVI @ 15 FPS	Up to 8MP TVI @ 8 FPS	Up to 8MP TVI @ 8 FPS
4/1	4/1	4/1	4/1	4/1
64 Kbps	64 Kbps	64 Kbps	64 Kbps	64 Kbps
32 Kbps to 10 Mbps	32 Kbps to 6 Mbps	32 Kbps to 6 Mbps	32 Kbps to 10 Mbps	32 Kbps to 10 Mbps
16 ch.	16 ch.	16 ch.	16 ch.	8 ch.
16/4	16/4	16/4	16/4	8/4
2, RJ45 10M/100M/1000M	2, RJ45 10M/100M/1000M	2, RJ45 10M/100M/1000M	1, RJ45 10M/100M/1000M	1, RJ45 10M/100M/1000M
self-adaptive Ethernet interface	self-adaptive Ethernet interface	self-adaptive Ethernet interface	self-adaptive Ethernet interface	self-adaptive Ethernet interface
2 × USB 2.0, 1 × USB 3.0	2 × USB 2.0, 1 × USB 3.0	2 × USB 2.0, 1 × USB 3.0	1 × USB 3.0, 1 × USB 2.0	1 × USB 3.0, 1 × USB 2.0
1 × RS-232, 1 × RS-485, Keyboard	1 × RS-232, 1 × RS-485, Keyboard	1 × RS-232, 1 × RS-485, Keyboard	1 × RS-485 serial interface	1 × RS-485 serial interface
4 SATA interface Up to 10TB each bay	4 SATA interface Up to 10TB each bay	4 SATA interface Up to 10TB each bay	2 SATA interface Up to 10TB each bay	2 SATA interface Up to 10TB each bay
Support	Support	Support	Support	Support
100 ~ 240VAC	100 ~ 240VAC	100 ~ 240VAC	12 VDC	12 VDC
≤ 74 W (without HDD)	≤ 45 W (without HDD)	< 45W (without HDD)	≤ 25 W (without HDD)	≤ 20 W (without HDD)
17.3 × 15.4 × 2.8 inch	17.5 × 15.3 × 2.7 inch	17.5 × 15.3 × 2.7 inch	15.0 × 12.6 × 1.9 inch	15.0 × 12.6 × 1.9 inch
15.4 lbs	15.4 lbs	15.4 lbs	4.4 lbs	3.9 lbs

2 MP TVI PTZ

HAP312-IR/32X

HAP312-OD/32X

HAP312-IR/25X



Description	1080P TVI / CVI / AHD / Analog PTZ, Exterior	1080P TVI / CVI / AHD / Analog PTZ, Exterior	1080P TVI / CVI / AHD / Analog PTZ, Exterior
Image Sensor	1/2.8" CMOS	1/2.8" CMOS	1/2.8" CMOS
Resolution	1920×1080	1920×1080	1920×1080
Min. Illumination	Color: 0.005 Lux @ F1.2, 0 Lux with IR B/W: 0.001 Lux @ F1.2	Color: 0.005 Lux @ F1.2 B/W: 0.001 Lux @ F1.2	Color: 0.005 Lux @ F1.2, 0 Lux with IR B/W: 0.001 Lux @ F1.2
Shutter Time	1-1/10,000s	1-1/10,000s	1-1/10,000s
Lens	4.8 mm to 153 mm, 32X	4.8 mm to 153 mm, 32X	4.8 mm to 120 mm, 25X
DNR	3D DNR, BLC, HLC, EIS	3D DNR, BLC, HLC, EIS	3D DNR, BLC, HLC, EIS
Day & Night	IR Cut Filter	IR Cut Filter	IR Cut Filter
Wide Dynamic Range	120dB WDR	120dB WDR	120dB WDR
Frame Rate	1920×1080 @ 30FPS (60Hz)/ 25FPS (50Hz)	1920×1080 @ 30FPS (60Hz)/ 25FPS (50Hz)	1920×1080 @ 30FPS (60Hz)/ 25FPS (50Hz)
Angle of View	54.2° to 1.97° (wide-tele)	54.2° to 1.97° (wide-tele)	57.6° to 2.5° (wide-tele)
Optical / Digital Zoom	32X / 16X	32 / 16X	25X / 16X
HD Video Output	1 HD-TVI out, 1 Analog BNC (Support AHD & CVI)	1 HD-TVI out, 1 Analog BNC (Support AHD & CVI)	1 HD-TVI out, 1 Analog BNC (Support AHD & CVI)
Power Consumption	24VAC Max. 40W	24VAC Max. 24W	24VAC Max. 40W
IR Range	450 ft	N/A	450 ft
Operating Temperature / Humidity	-30 °C-65 °C (-22°F-149°F)/ 90% or less	-30 °C-65 °C (-22°F-149°F)/ 90% or less	-30 °C-65 °C (-22°F-149°F)/ 90% or less
Dimension	Φ8.66"×13.91"	Φ8.66"×12.0"	Φ8.66"×13.91"
Weight	9.92 lbs	6.61 lbs	9.92 lbs
Wall, Pendant Mount	W: 602ZJ, P: -661(2)ZJ	W: 602ZJ, P: 661(2)ZJ	W: 602ZJ, P: 661(2)ZJ
Pole, Corner Mount	P: 602ZJ-POLE, C: 602ZJ-CORNER	P: 602ZJ-POLE, C: 602ZJ-CORNER	P: 602ZJ-POLE, C: 602ZJ-CORNER

PTZ MOUNTING BRACKETS



660ZJ
PTZ Parapet Wall Mount



602ZJ-BOX
PTZ Wall Mount with electrical box



602ZJ
PTZ Wall Mount



602ZJ-POLE
PTZ Pole Mount

HD-TVI Hybrid Video Recorder

HAR326-4



HAR324-16



HAR324-8



HAR324-4



5MP TVI / CVI / AHD 4 Ch. DVR	4MP TVI / CVI / AHD 16 Ch. DVR	4MP TVI / CVI / AHD 8 Ch. DVR	4MP TVI / CVI / AHD 4 Ch. DVR
H.264/ H.264+/ H. 265 / H.265+	H.264/ H.264+/ H. 265 / H.265+	H.264/ H.264+/ H. 265 / H.265+	H.264/ H.264+/ H. 265 / H.265+
G.711u	G.711u	G.711u	G.711u
4 BNC input, 1Vp-p, 75Ω	16 BNC input, 1Vp-p, 75Ω	8 BNC input, 1Vp-p, 75Ω	4 BNC input, 1Vp-p, 75Ω
Up to 8ch @ 8 MP Resoluituion	Up to 24ch @ 6 MP Resoluituion	Up to 12ch @ 6 MP Resoluituion	Up to 6ch @ 6 MP Resoluituion
1 HDMI, 1 VGA, 1 CVBS up to 1920 × 1080	1 HDMI, 1 VGA, 1 CVBS up to 4K	1 HDMI, 1 VGA, 1 CVBS up to 1920 × 1080	1 HDMI, 1 VGA, 1 CVBS up to 1920 × 1080
Up to 5MP TVI @ 12 FPS	Up to 4MP TVI @ 15 FPS	Up to 4MP TVI @ 15 FPS	Up to 4MP TVI @ 15 FPS
4/1	1/1	1/1	1/1
64 Kbps	64 Kbps	64 Kbps	64 Kbps
32 Kbps to 10 Mbps	32 Kbps to 6 Mbps	32 Kbps to 6 Mbps	32 Kbps to 6 Mbps
4 ch.	16 ch.	8 ch.	4 ch.
4/1	N/A	N/A	N/A
1, RJ45 10M/100M	1, RJ45 10M/100M/1000M	1, RJ45 10M/100M/1000M	1, RJ45 10M/100M/1000M
self-adaptive Ethernet interface	self-adaptive Ethernet interface	self-adaptive Ethernet interface	self-adaptive Ethernet interface"
2 × USB 2.0	1 × USB 3.0, 1 × USB 2.0	2 × USB 2.0	2 × USB 2.0
1 × RS-485 serial interface	1 × RS-485 serial interface	1 × RS-485 serial interface	1 × RS-485 serial interface
1 SATA interface Up to 10TB each bay	2 SATA interface Up to 10TB each bay	1 SATA interface Up to 10TB	1 SATA interface Up to 10TB
Support	Support	Support	Support
12 VDC	12 VDC	12 VDC	12 VDC
≤ 10 W (without HDD)	≤ 25 W (without HDD)	≤ 7.5 W (without HDD)	≤ 6 W (without HDD)
12.4 × 9.5 × 1.8 inch	15.0 × 12.6 × 1.9 inch	12.4 × 9.6 × 1.8 inch	12.4 × 9.5 × 1.8 inch
2.6 lbs	4.4 lbs	3.9 lbs	2.6 lbs

2 MP TVI PTZ

HAP312-OD/25X



HAP312-ID/25X



HAP112-OD/25X



HAP112-ID/25X



1080P TVI / CVI / AHD / Analog PTZ, Exterior	1080P TVI / CVI / AHD / Analog PTZ, Interior	1080P TVI / CVI / AHD / Analog PTZ, Exterior	1080P TVI / CVI / AHD / Analog PTZ, Interior
1/2.8" CMOS	1/2.8" CMOS	1/2.8" CMOS	1/2.8" CMOS
1920×1080	1920×1080	1920×1080	1920×1080
Color: 0.005 Lux @ F1.2	Color: 0.005 Lux @ F1.2	Color: 0.005 Lux @ F1.2	Color: 0.005 Lux @ F1.2
B/W: 0.001 Lux @ F1.2	B/W: 0.001 Lux @ F1.2	B/W: 0.001 Lux @ F1.2	B/W: 0.001 Lux @ F1.2
1-1/10,000s	1-1/10,000s	1-1/10,000s	1-1/10,000s
4.8 mm to 120 mm, 25x	4.8 mm to 120 mm, 25x	4.8 mm to 120 mm, 25x	4.8 mm to 120 mm, 25x
3D DNR, BLC, HLC, EIS	3D DNR, BLC, HLC, EIS	3D DNR, BLC, HLC, EIS	3D DNR, BLC, HLC, EIS
IR Cut Filter	IR Cut Filter	IR Cut Filter	IR Cut Filter
120dB WDR	120dB WDR	120dB WDR	120dB WDR
1920×1080 @ 30FPS (60Hz)/ 25FPS (50Hz)	1920×1080 @ 30FPS (60Hz)/ 25FPS (50Hz)	1920×1080 @ 30FPS (60Hz)/ 25FPS (50Hz)	1920×1080 @ 30FPS (60Hz)/ 25FPS (50Hz)
57.6° to 2.5° (wide-tele)	57.6° to 2.5° (wide-tele)	57.6° to 2.5° (wide-tele)	57.6° to 2.5° (wide-tele)
25X / 16X	25X / 16X	25X / 16X	25X / 16X
1 HD-TVI out, 1 Analog BNC (Support AHD & CVI)	1 HD-TVI out, 1 Analog BNC (Support AHD & CVI)	1 HD-TVI out, 1 Analog BNC (Support AHD & CVI)	1 HD-TVI out, 1 Analog BNC (Support AHD & CVI)
24VAC Max. 24W	24VAC Max. 18W	24VAC Max. 20W	24VAC Max. 14W
N/A	N/A	N/A	N/A
-30 °C-65 °C (-22°F-149°F)/ 90% or less	-10 °C-50 °C (14°F-122°F)/ 90% or less	-30 °C-65 °C (-22°F-149°F)/ 90% or less	-10 °C-50 °C (14°F-122°F)/ 90% or less
Φ8.66"×12.83"	Φ6.14"×9.29"	Φ7.1"×9.4"	Φ6.5"×7.1"
6.61 lbs	6.61 lbs	4.41 lbs	4.41 lbs
W: 602-ZJ, P: 661(2)ZJ	N/A	W: 602ZJ, P: 661(2)ZJ	N/A
P: 602ZJ-POLE, C: 602ZJ-CORNER	N/A	P: 602ZJ-POLE, C: 602ZJ-CORNER	N/A



661ZJ

PTZ Ceiling Pendant Mount 1ft.



602ZJ-CORNER

PTZ Corner Mount



662ZJ

PTZ Ceiling Pendant Mount 3ft.



Perfect View is a complete video surveillance solution. With commercial-grade IP, TVI and Analog equipment, we provide flexibility for all applications. Access cameras from anywhere; even manage multiple systems with a free state-of-the-art CMS (Centralized Management Software).

NO LICENSE FEES

RESOLUTION

- IP up to 20 MP
- TVI up to 8 MP
- CVI / AHD / Analog Supported

QUALITY SUPPORT AND PRODUCTS

- 3 Year Warranty
- ONVIF 2.5 Compliant IP Cameras
- Advanced Replacement
- In-House Technical Support
- One Stop Shop with Wireless and Switches

MONITOR UP TO 256 RECORDERS OR OVER 1000 CAMERAS PER PC

- View up to 64 Cameras at Once
- View up to 4 Monitors per PC

BENEFITS

- Safety
- Fraud Protection
- Theft Deterrent
- Quality Control
- Insurance Premiums



MOBILE APP FOR SMARTPHONES AND TABLETS



PC/MAC COMPATIBILITY



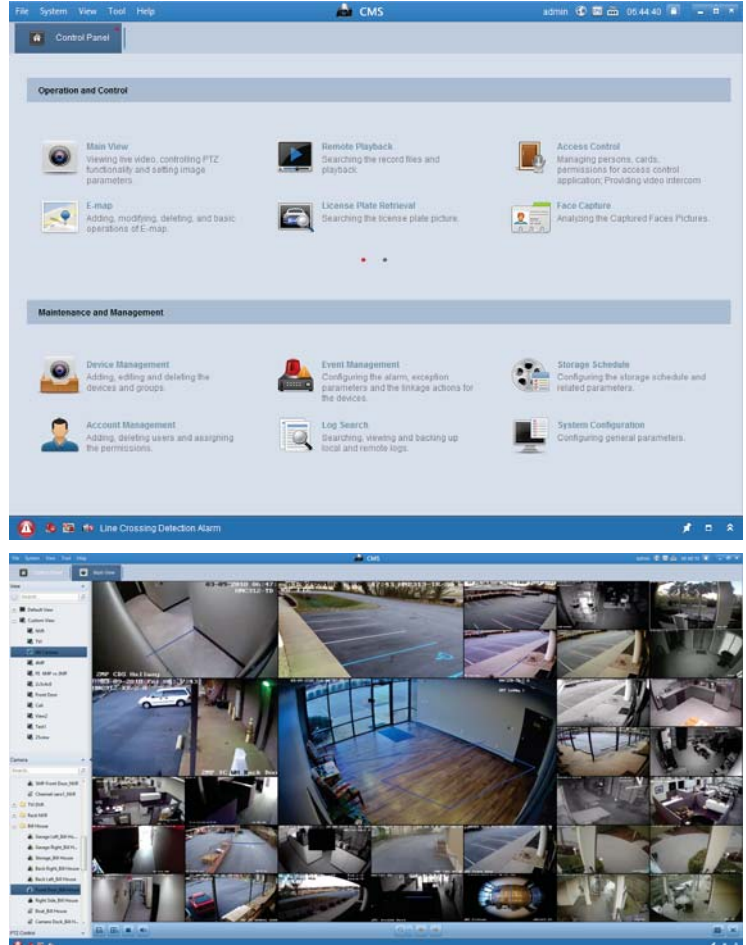
SALES: PerfectViewSales@teleco.com | **SUPPORT:** PerfectViewSupport@teleco.com



Q: What can you do with our Centralized Management Software (CMS)?
A: The question should be, "What can't you do with it?"

SUPPORT UP TO 4 MONITORS AND 64 CAMERAS IN LIVE VIEW

- Up to 256 Encoded Devices
- Up to 64 Decoded Devices
- Up to 1024 Imported Cameras
- Up to 256 Camera Groups, with a Maximum of 256 Cameras in One Group
- Up to 16 Storage Servers, each Server's Recording Performance is 64x2Mbps
- Up to 16 Streams per Media Server, each Server has Incoming Connections of 64 Cameras and Outgoing Connections of 200 Cameras
- Up to 16 Camera Synchronized Playback
- Up to 16 Simultaneous Download Tasks
- Up to 50 Users



Our management software has no licensing fees and provides unparalleled control and administration of your clients entire surveillance system.

THE PERFECT WAY TO STAY SECURE.



MAC AND WINDOWS COMPATIBLE

CDS: 888.550.5700 | **SALES:** PerfectViewSales@teleco.com | **SUPPORT:** PerfectViewSupport@teleco.com

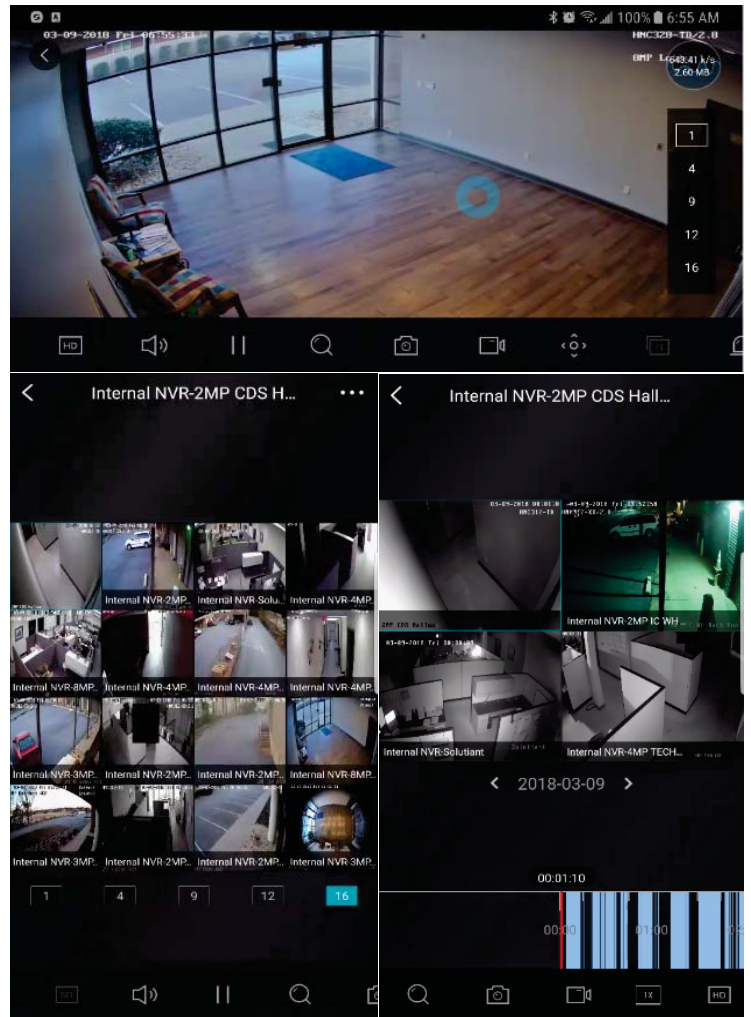




Q: Surveillance on the move?
A: Absolutely. Use Guarding Vision with your smartphone or tablet.

GUARDING VISION MOBILE APPLICATION

- Up to 256 Devices
- Up to 32 Cameras in One Live Session
- Remote Playback up to 4 Cameras
- Frame Rate up to 30fps (Device and Network Permitting)
- Resolution up to 1080p
- Stream includes Video and Audio
- Control Pan, Tilt and Zoom on PTZ Cameras
- Snapshot and Video Recording in Live View
- Clear, Balanced, Fluent and Customized Streams
- Simple, Intuitive Interface



Our mobile client seamlessly integrates with any Perfect View Recorder or IP camera from any networked location.



Guarding Vision available from your mobile app store.

CDS: 888.550.5700 | **SALES:** PerfectViewSales@teleco.com | **SUPPORT:** PerfectViewSupport@teleco.com



RECORDERS & PTZs



COMMERCIAL-GRADE IP, TVI
AND ANALOG VIDEO
SURVEILLANCE SYSTEMS



PERFECTTM
VIEW

VIDEO SURVEILLANCE



TELECO.COM

430 WOODRUFF RD, SUITE 300, GREENVILLE, SC 29607

800.800.6159

